

**Barents Cross-Border University-BCBU 2012**

**13-14 March 2012**

**University of Lapland, Rovaniemi, Finland**

## **Northern State Medical University**

**Alexander Vyazmin,**

**Vice-Rector, Professor**

### **NORTHERN STATE MEDICAL UNIVERSITY - Arkhangelsk**



•**The world's northernmost** medical school was established in October 1931 (Decision of Council of People's Commissars of the RSFSR № 1055)

•**The first lecture** took place on December 2, 1932

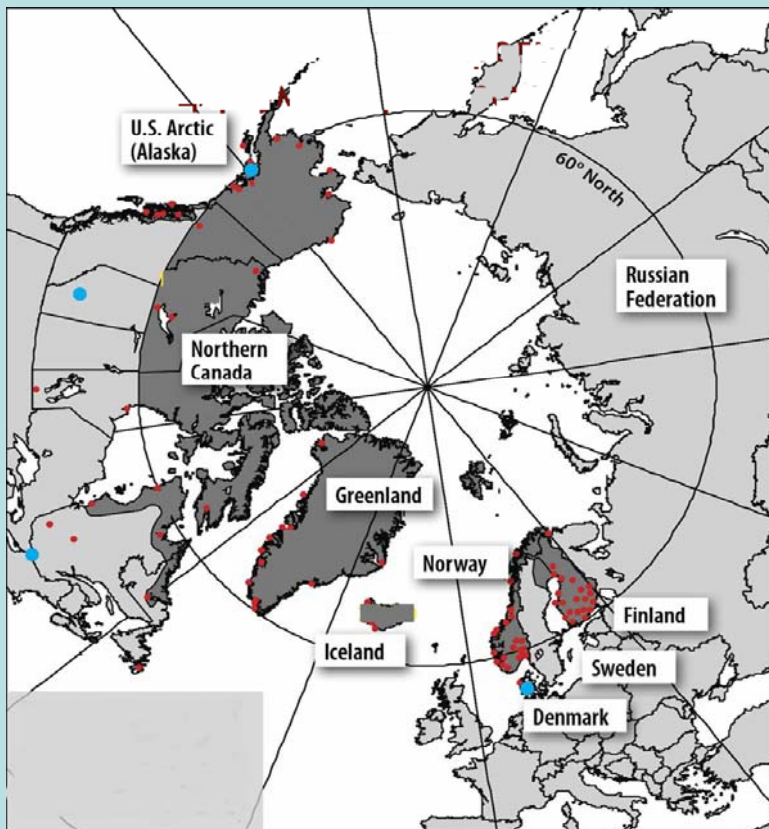
•**In 1993** ASMI was renamed ASMA (Decision of the Government of the Russian Federation dated 11.09.1992, № 1691-r and the Order of the State Committee of Russia dated 15.06.1994, № 586)

•**In 2000** ASMA was renamed Northern State Medical University (Russian Federation Government Resolution dated 24.03.2000, № 258 and the Order of the Ministry of Education of the Russian Federation dated 09.10.2000, № 2910)

•**In 2010** NSMU was accredited as a university for 5 years (Order of the Federal Service for Supervision in Education and Science dated 26.04.2010, № 1022)



## International Circumpolar Zone



Countries	Univer sities	With medical faculties
USA, Alaska	4	-
Canada	-	-
Greenland	1	-
Iceland	1	1
Norway	3	1
Sweden	4	3
Finland	20	3
Russia	124	3+1 NSMU
Total	157	11+1 NSMU

## Northern medical university area



## Structure of educational departments

- Faculties – 9
- Institutes – 8
- Departments – 60

Including:

- Theoretical departments – 28
- Clinical departments – 32, at 29 clinical bases
- Center of pre-university education and vocational orientation
- Medical College

## Students of NSMU

Full-time students - 2706

Students by correspondence - 1987

College students - 209

Foreign students - 229

PHD candidate - 121

Clinical internship - 326

Clinical residenseship – 99

Listeners of a magistracy- 18

Course students (postgraduate) - 4565

Prospective students - 461

# Training programs of postgraduate education and additional professional education

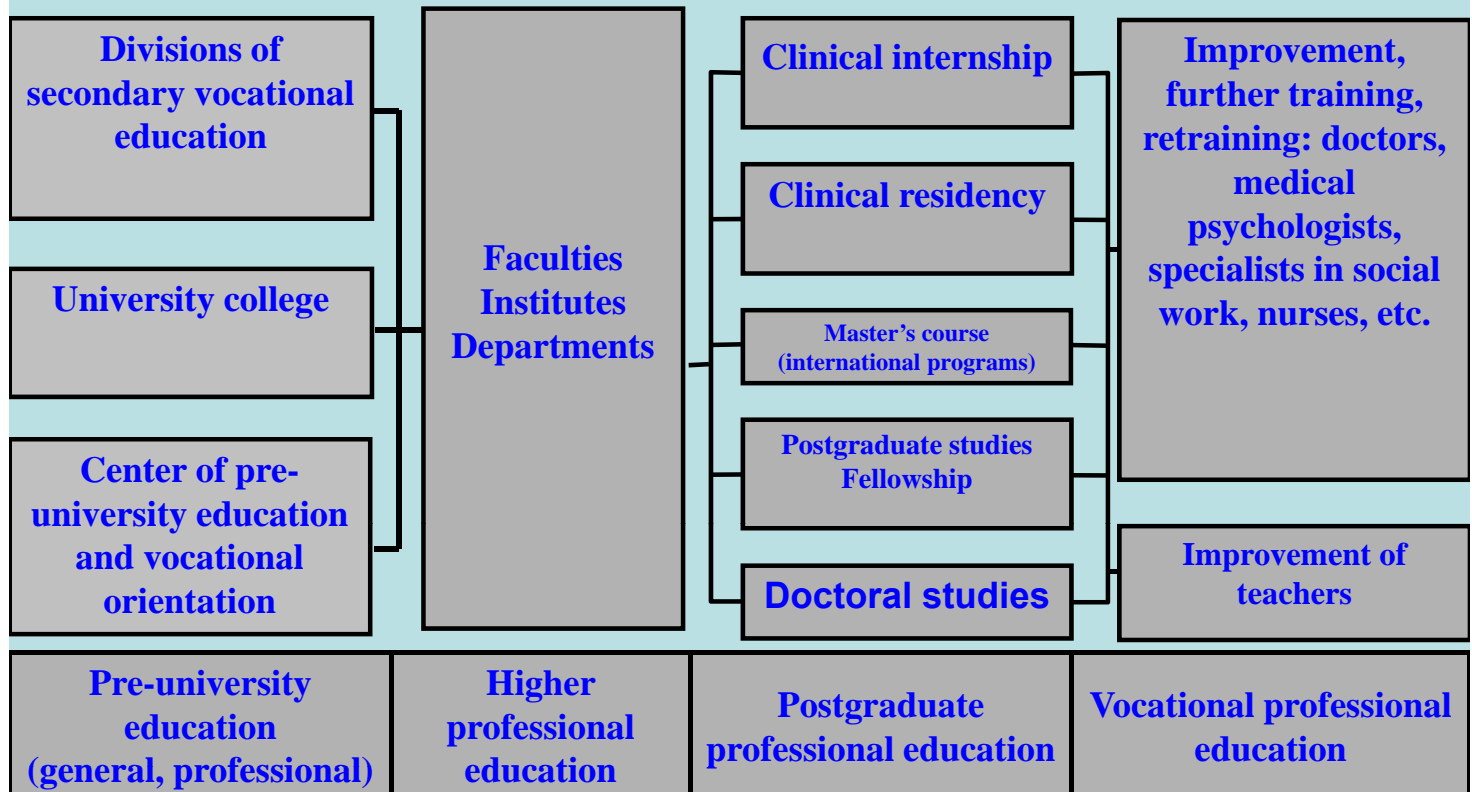
**Internship** – 28 programs

**Residenseship** – 66 program

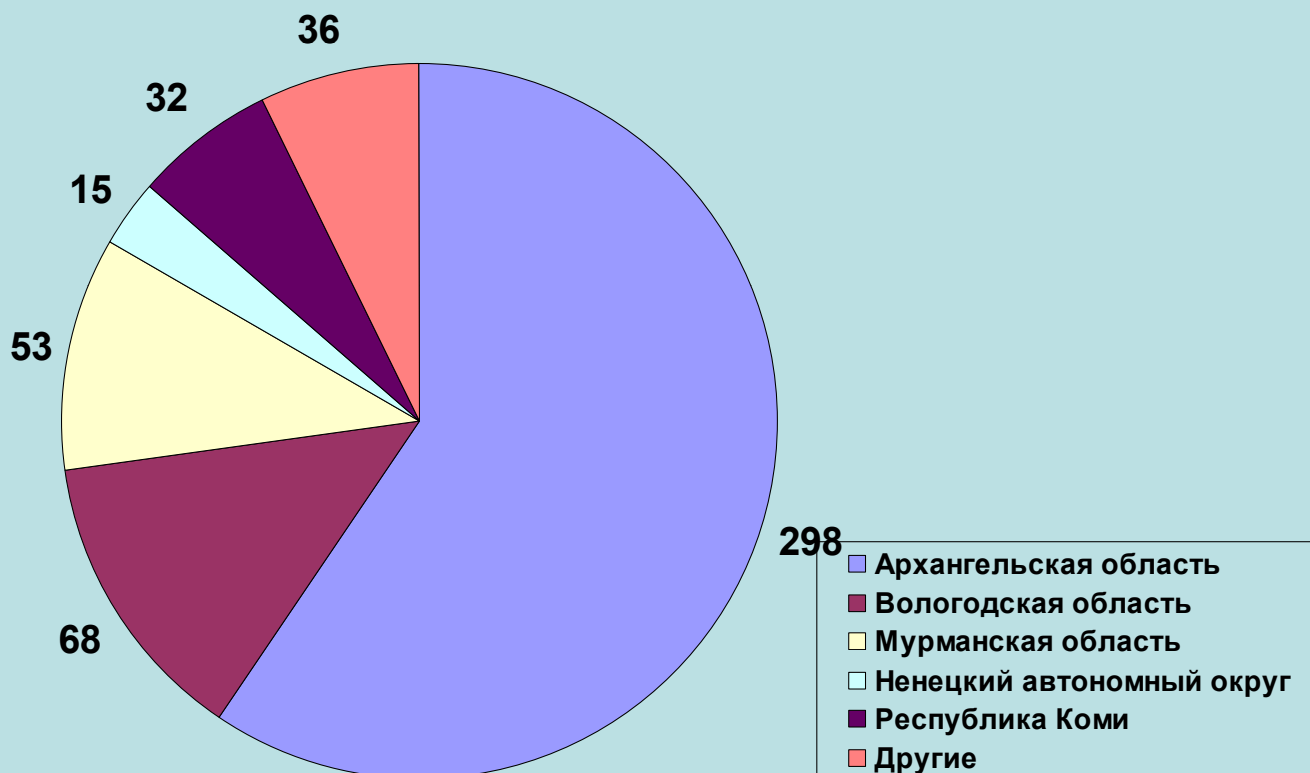
**PHD Candidates** - 35 specialties

**APE** (additional professional education for doctors) – 62 programs

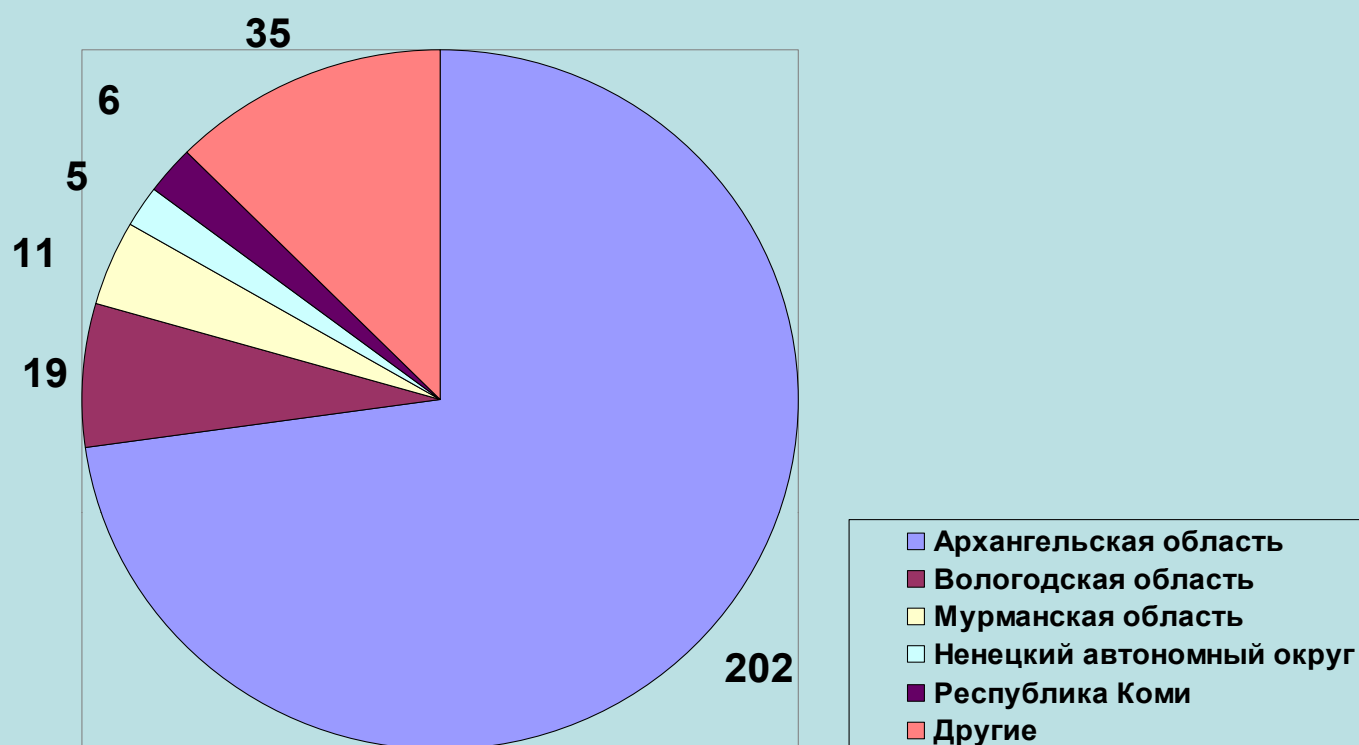
## NSMU continuing education system



## Admission to medical specialities: geography in 2011



## Distribution of graduates: geography in 2011



## Structure of NSMU scientific departments

- Northern Scientific Center NWD RAMS
- Research Center for system monitoring of the educational environment development in the European North NWD RAE
- Northern Branch of the State Research Center of RAMS
- Research Institute of Naval Medicine
- Research Institute of Arctic Medicine
- Central Scientific Research Laboratory
- PCR diagnostic laboratory
- Medical and genetic laboratory of PCR tuberculosis diagnostics
- Hemostasis laboratory
- Dissertation Councils
- The journal "Human Ecology"
- Publishing house

## Main Scientific Directions of young scientists of NSMU



«Health of population of Russian North»  
2009-2012 гг.

# NSMU priority research areas

Северный научный центр Северо-Западного отделения РАМН  
Северный государственный медицинский университет  
XXXVIII Ломоносовские чтения



РЕГИОНАЛЬНАЯ  
НАУЧНО-ТЕХНИЧЕСКАЯ ПРОГРАММА

«Здоровье населения Европейского Севера»  
(2009-2012 гг.)



- Current issues of health of different populations of the European North
- Safety in emergencies: experimental and clinical studies of pathological processes, caused by extreme situations.
- Occupational Medicine, study of shift work effect on the organism
- Actual problems of marine and military medicine
- Medical and environmental aspects of the health status of indigenous and migrant population in the northern territories of Russia

## Scientific results in 2011

Monographs – 16

Training manuals- 54

Scientific collections 14

Patents – 9

Innovations – 9

Articles in peer-reviewed journals – 446

Conferences - 26



# Publishing at NSMU



- Magazine «Human Ecology» (12 issues per year)
- Bulletin NSMU (2 issues per year)

## Main International activities of NSMU

- Contacts with more than 150 universities from more than 20 countries.
- Agreements with 27 foreign universities from Europe and USA.
- Cooperation with national and international funds.
- NSMU –ASPHER member from 2007.
- NSMU – member of Barents E-University.
- Local committee of IFMSA.




# ASPHER CERTIFICATE of MEMBERSHIP



THE ASSOCIATION OF SCHOOLS OF PUBLIC HEALTH  
IN THE EUROPEAN REGION

This is to certify that  
**ARKHANGELSK  
INTERNATIONAL SCHOOL OF PUBLIC HEALTH**  
is a Member of ASPHER for the year 2008

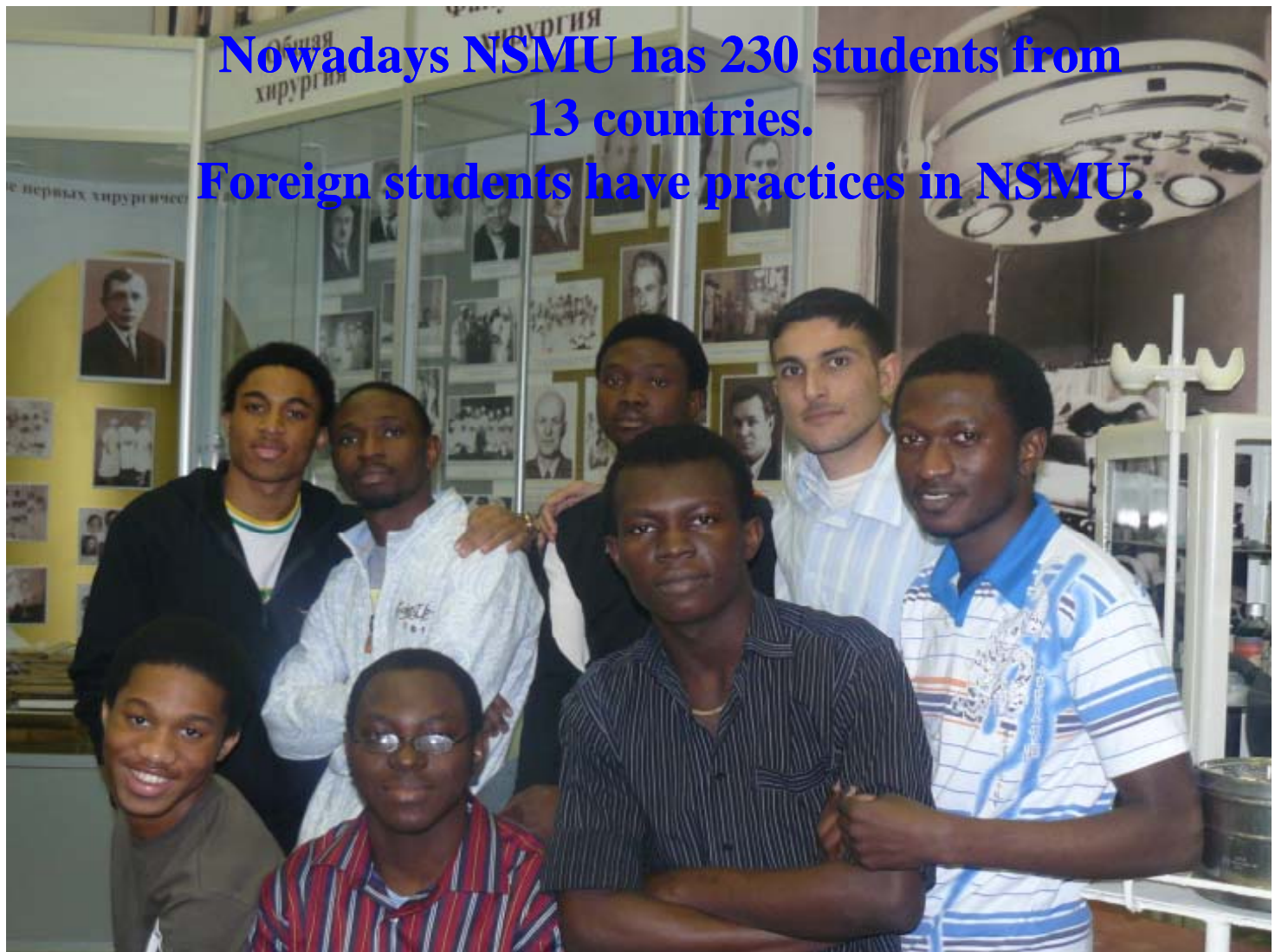
ISSUED:  
VALENCIA, 26 OCTOBER 2007

  
STOJGNIEW JACEK SITKO  
ASPHER PRESIDENT



ASPHER is the key independent organisation dedicated  
to strengthening the role of public health through the training  
of public health professionals for both practice and research.  
[www.aspher.org](http://www.aspher.org)

**Nowadays NSMU has 230 students from  
13 countries.  
Foreign students have practices in NSMU.**





**NSMU - winner and laureate of all-Russian contest "Quality assurance systems of graduates training in educational institutions providing professional education" (2007, 2008)**



**NSMU quality management system is certified in 2011**





**Thank you for your attention**

**Alexander Vyazmin**  
**Vice rector for strategic development**  
**Professor of public health**

**E-mail: [vyazmin@nsmu.ru](mailto:vyazmin@nsmu.ru)**

**Tel: +7 (8182) 285761**