



***For the North - By the North
Welcome to the University of
Lapland!***

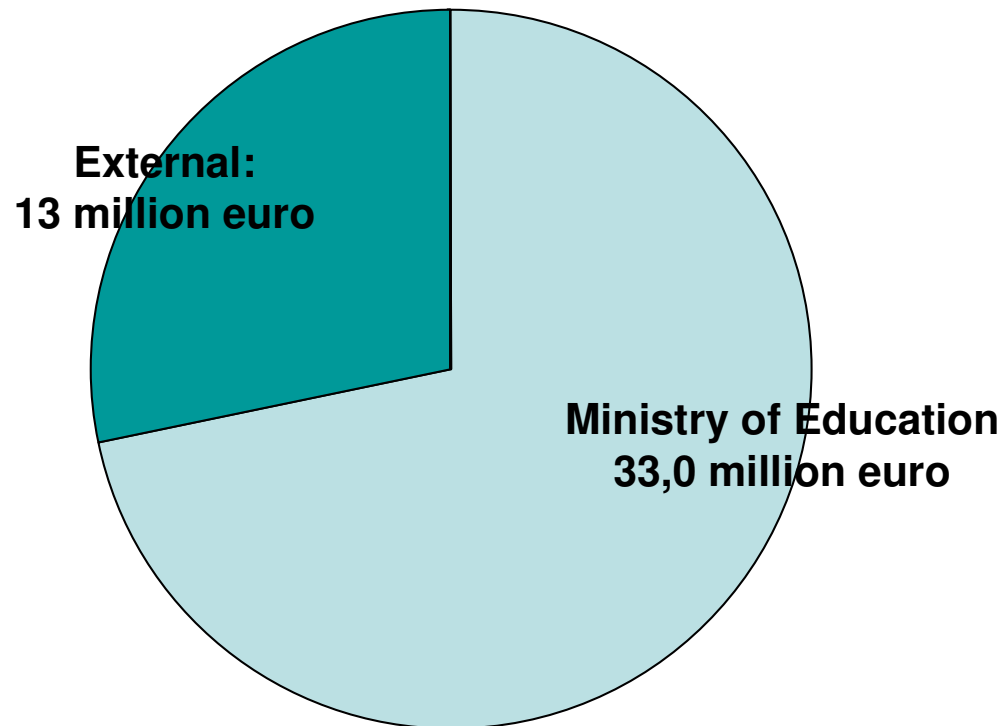
University of Lapland Facts and Figures



- **Northern most university** in Finland and in European Union
- **Faculties:** Art and Design, Business and Tourism, Education, Law, Social Sciences
- **4,700 students** (ca 4,300 graduate and 400 postgraduate; 350 foreign students out of which 220 foreign exchange students)
- 8 500 Adult Education (Open university, Continuing Education and University of the Third age)
- **Staff:** ca 650 (professorships: 62)

Funding

Budget 2006
46 million euro



Faculties and degree programmes

Faculty of Education:

- Teacher Training
- Education , Adult Education, Media Education
- Teacher Training School



Faculty of Law:

- Master of Laws
- Specialities: Legal Informatics and Legal Linguistics



Faculty of Social Sciences:

- International Relations
- Political Science
- Public Administration
- Public Law
- Rehabilitation
- Social Work
- Sociology
- Applied Psychology



Faculty of Business and Tourism:

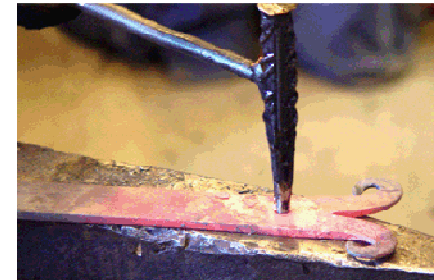
- **Accounting**
- **Management**
- **Marketing**
- **Tourism Studies**

Faculty of Art and Design:

- **Art Education**
- **Graphic Design**
- **Industrial Design**
- **Media Studies**
- **Textile and Clothing**

Examples of other studies:

- **Information Technology and Applied IT**
- **Different types of Programmes (eg. Arctic Studies Program, Social Work)**



Institutes

Meri-Lappi Institute (in the city of Kemi)

- Founded in 1998 together with Oulu University
- Development projects (eg. Forestry, Wood, Logistics in the Barents Region)

Regional Services of the University of Lapland:

- Founded in 2005
- Education and Development Services – non-academic continuing education
- Open University
- Regional Development and Innovation Services – regional development projects
- Regional Research Services

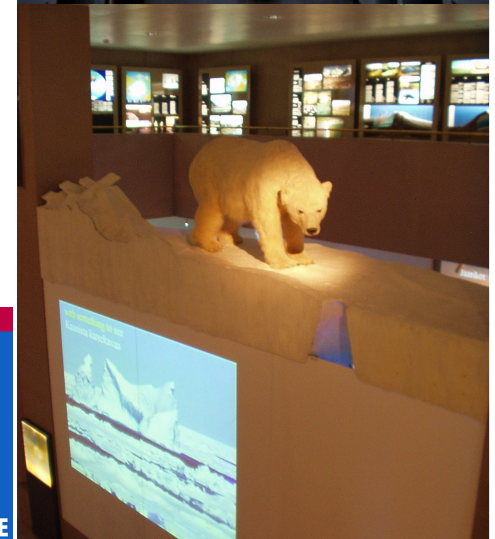


www.arcticcentre.org

- International
- Multidisciplinary research
- Staff: 70 – 100
- Budget: 3.8 m€, 40-50 % external funding

Themes

- Global Change in the Arctic
- Sustainable Development in the Arctic
- Northern Institute for Environmental and Minority Law
- Information dissemination to wide public
 - Science Centre Exhibition: renewed and opened 17 April
 - Web base Information Service
 - Arctic Library
- Arctic Studies Program
 - One year basic program
- Arktis –graduate school, 22 studies



- Environmental and Social Impact of Industrialization in Northern Russia
- Management of renewable resources in North-West Russia
- Heterogeneity and resilience of human- *Rangifer* systems: a circumpolar social- ecological synthesis.
- Community adaptation and vulnerability in Arctic regions
- Demographic movements in the Arctic, especially in Russia
- Arctic Indigenous Peoples and Sami Research Office
 - Sami research database published
 - Indigenous Peoples as International Political Actors
- Arctic Social Indicators



3.

Information service of Barents region

**Sustainable Transport
in the Barents Region**

**eLibrary & Culture
without Borders**

BarentsCustoms.org

"Rádju" Sami research
and other
research
Databases
Lapponica

Afbare



Ваше Окно в Баренц Регион
Your window to the Barents Region

www.barentsinfo.org

**Other
Internatl.:
Arctic
portals
IPY, PLC
RUSSIAinfo.org**

**Barents Euro-Arctic Council
Working Group on Environment**

**Barents Euro-Arctic Council
Working Group on Economic Cooperation**

Russian co-operation



International co-operation in University of Lapland

- **Active**
 - Northern Dimension Policy
 - Barents Euroarctic region network
 - Arctic co-operation
 - European university networks
 - Nordic co-operation
 - Asia –co-operation
 - **Hosting the University of the Arctic International Secretariat**
 - Chair of Northern Research Forum
 - **Russia Centre: co-ordination of CBU in ULapland**
 - **Appr. 250 collaboration agreements in 35 different countries (eg. European Union, USA, Canada, Japan, Korea, Argentina, Brazil, Chile, Australia, Russia)**
 - **Active in the European Union structural and regional funding programmes**
- Membership in several international organizations and networks (eg. UNEP Grida, ARCUS, Uarctic, CUA, EUA, EAIE)**

