

# Challenges, opportunities, and actions - even beyond the BCBU



Olli Silvén, D.Sc. (Tech.)  
Vice-Rector for Education  
Professor of Signal Processing Engineering



## The continuing challenges (1)

The volume of students in BCBU master's degree programs is still very small

- in 2-4 years the funding and cooperation could be in real danger

The University of Oulu has more than 600 international degree students

- yearly growth >25%; where is the growth of the BCBU programs?

From 2013 international education in Finland will be funded only based on

- degrees by international students, and
- at minimum 3 month exchange periods; in practice,
- we need to aim at double degrees

→ fine for the BCBU!

$$\oint_S \mathbf{D} \cdot d\mathbf{A} = \int_V \rho dV$$

$$\oint_S \mathbf{B} \cdot d\mathbf{A} = 0$$

$$\oint_C \mathbf{E} \cdot d\mathbf{l} - \oint_C \mathbf{B} \times \mathbf{v} \cdot d\mathbf{l} = - \frac{d}{dt} \int_S \mathbf{B} \cdot d\mathbf{A}$$

$$\oint_C \mathbf{H} \cdot d\mathbf{l} = \int_S \mathbf{J} \cdot d\mathbf{A} + \int_S \frac{\partial \mathbf{D}}{\partial t} \cdot d\mathbf{A}$$



## The continuing challenges (2)

Are the student flows low, because of

- the lack of sufficient funding for the students?
- difficulties of the students to get their course credits accepted at their home institution?
- knowledge of the exchange and double degree opportunities?
- lack of courses/modules in English at the participating institutions?

In any case, something *\*must\** be done to see the BCBU operating in 2020

- in the long term the operating volumes and funding must be in balance

What can WE do?

- how do we best create opportunities for the younger generation and our children?



## Creating opportunities for the students

To use the potential of BCBU in full, the **University of Oulu**

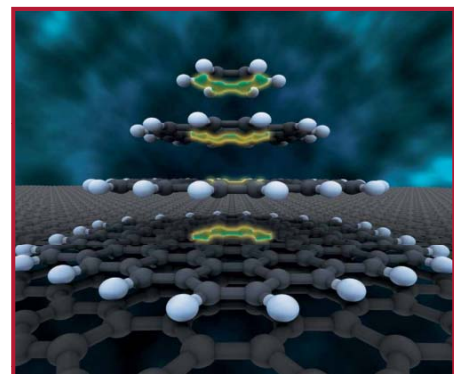
- opens its all operating international master's degree programs for students from its BCBU partner universities, and
- opens even its preparatory stage international master's degree programs for exchange students
- offers 5 months \* 510€ mobility grants for students from BCBU partner universities in Russia (3 grants per bi-lateral partner)

The **University of Lapland** joins the action:

- offers one grant per Russian BCBU partner
- same terms as by the University of Oulu

The application period is now open

- deadline May 31 for the Fall 2012 and
- October 15 for the Spring 2013



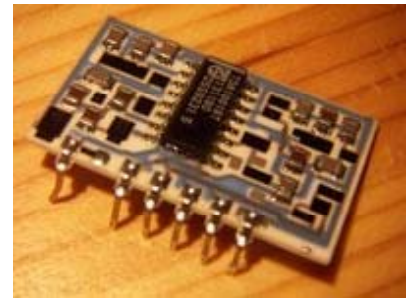
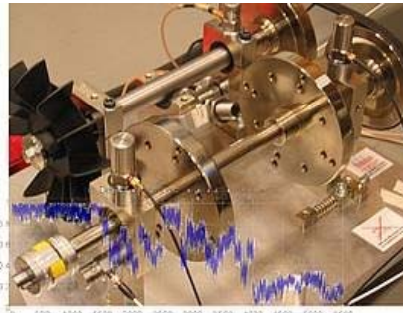
## The rationale

A wider course and degree program palette should attract more students

- the international master's degree programs are a foundation
- an increased number of international students provide for attractive networking opportunities for the students

Double degree arrangements should be easier after an exchange period

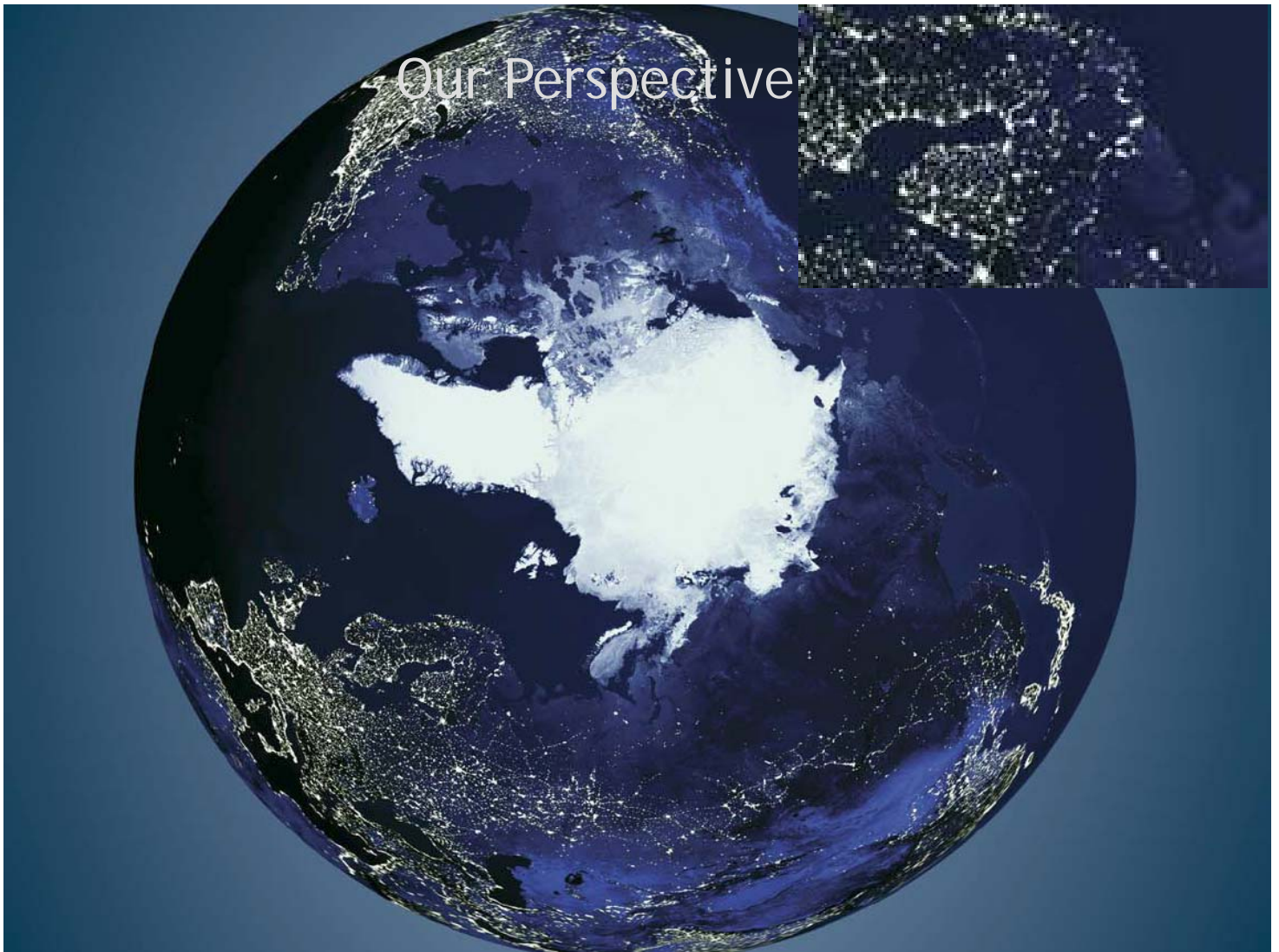
- University of Oulu aims at study background diversity  
→ components from other institutions straightforward to accept in degrees



OULUN YLIOPISTO  
UNIVERSITY of OULU



Our Perspective







## Summary

More student flows to all directions are needed to keep the BCBU cooperation running

- more double degree students
- more exchange students
- more courses in English
- more module offerings in English
- more support for student mobility

More visibility for BCBU and partners' international degree programs

- inclusion of partner programs in each partner's prospectus
- 'marketing' actions to wake-up student and staff interest



## The questions

Are studies by Russian students at foreign institutions accepted at their home institutions?

Are Russian students actively encouraged to participate in international student exchange?





## •Strategy development paths for cooperation

